

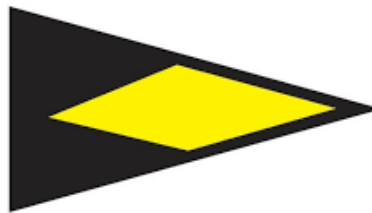


# **MELGES**<sup>24</sup>

# **World Championship**

## **October 2026 Proposal**

*presented by*



Little Traverse Yacht Club  
*Little Traverse Bay / Harbor Springs, MI, USA*

## **COME RACE WITH US IN HARBOR SPRINGS, MI, USA**

Harbor Springs, Michigan, home to the Little Traverse Yacht Club (LTYC), stands out as one of the premier racing venues in the United States and on the Great Lakes. Renowned for its world-class racing, natural beauty, and undeniable charm, it provides the perfect setting for the 2026 Melges 24 World Championship.

The event's timing further amplifies its appeal, as the area transforms into a canvas of vivid fall colors, offering a breathtaking backdrop to intense competition.

At the heart of the Melges 24 Midwest region, the state of Michigan has long been a cornerstone of strength and activity for the U.S. Class and has hosted the very successful Quantum Sails Melges 24 Great Lakes Cup Series for the last 5 years.

With healthy fleets in Traverse City, Muskegon, Detroit, and Charlevoix, and a growing and thriving Canadian fleet nearby, a higher level of participation will be easily achievable. Although not confirmed, it is anticipated that in 2026, the U.S. National Championship may be awarded to Traverse City, which will only serve as a positive proponent for inducing and attracting a higher level of attendance at Worlds.

Harbor Springs offers everything the International Melges 24 fleet seeks in a World Championship venue:

- Exceptional race management and facilities, and conditions worthy of a Worlds
- A deep, protected harbor regarded as one of the finest racing venues on the Great Lakes and in the U.S.A.
- A vibrant local culture combined with renowned hospitality
- A charming, historic waterfront town with unique shops, gourmet restaurants, art galleries, and boutiques
- Plentiful, diversified housing and accommodations to fit any team's needs
- Logistical ease paired with convenient transportation access, ensuring seamless arrivals, boat preparation, and participation for teams from around the globe.

Harbor Springs isn't just a destination; it's an opportunity to showcase the very best of the Melges 24 Class in an unforgettable setting.

# INDEX

1. Venue
2. About Harbor Springs & Little Traverse Yacht Club (LTYC)
3. Historical Wind & Temperature  
*Time of Year/Season/Weather*
4. Race Course
5. Race Management Afloat
6. Race Management Ashore
7. Shore Facilities & Dockage
8. Location
9. Logistics
10. Housing & Accommodations
11. Food and Entertainment
12. Contact

# 1. VENUE



Little Traverse Bay is a large freshwater bay located in the Northeast corner of Lake Michigan. It is 7 miles wide (east to west) and 3.5 miles long (North to South), with the longest fetch aligning with the predominant westerly winds and devoid of current and tides. September and October are great months for sailing with warm water, ample daylight and reliable West/Southwest and Northeast winds historically averaging 10kts.

## 2. HARBOR SPRINGS & LITTLE TRAVERSE YACHT CLUB (LTYC)



Little Traverse Bay is bordered by the towns of Petoskey to the South and Harbor Springs to the north. Harbor Springs is the home of Little Traverse Yacht Club and the center of yacht racing in Northern Michigan. Petoskey is 15 minutes from Harbor Springs and is slightly larger with more housing, dining and shopping options. The Fall months offer ample housing opportunities.

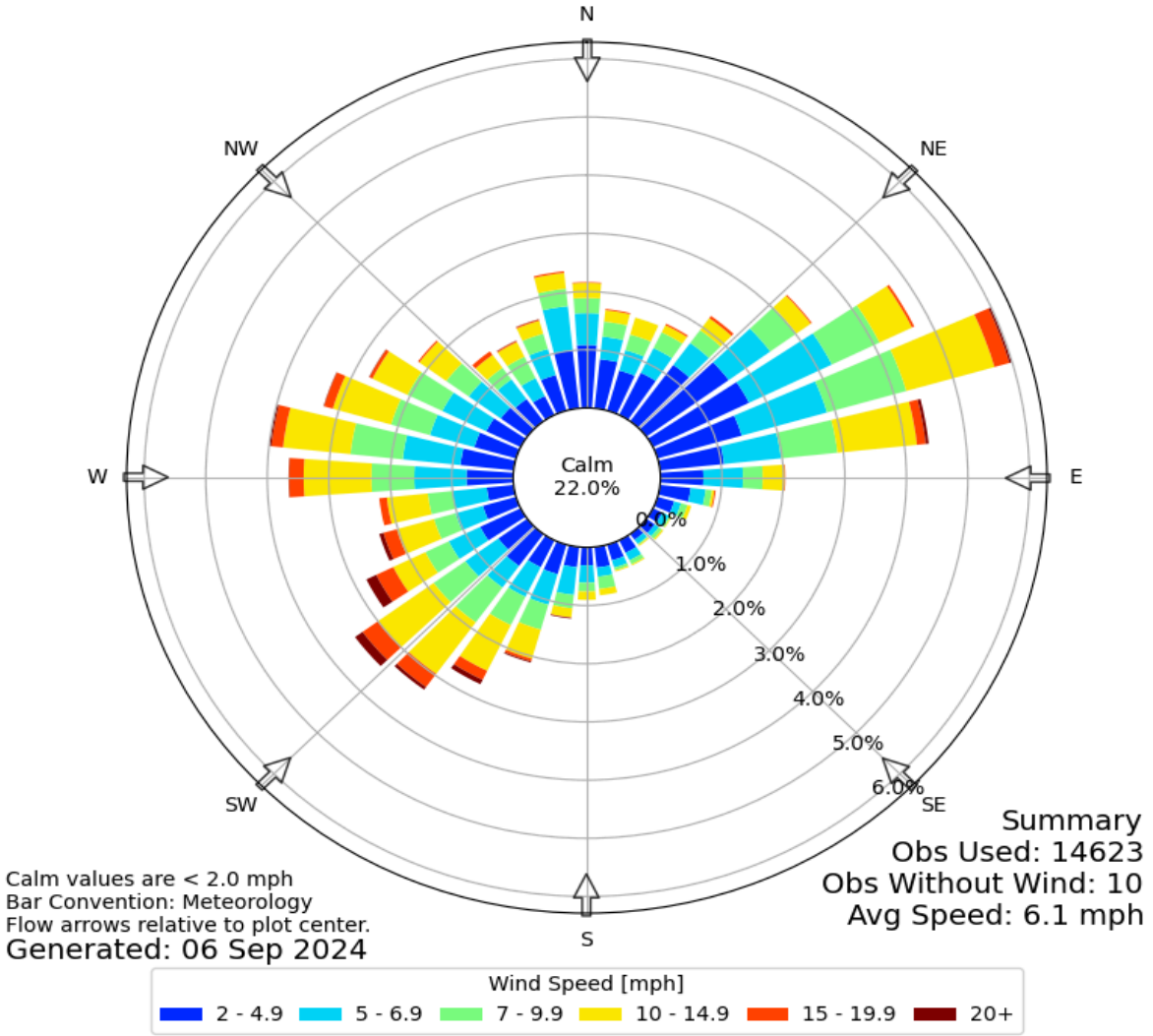


*LTYC has hosted numerous National, North American and World Championships over the years.*

### 3. HISTORICAL WIND & TEMPERATURE

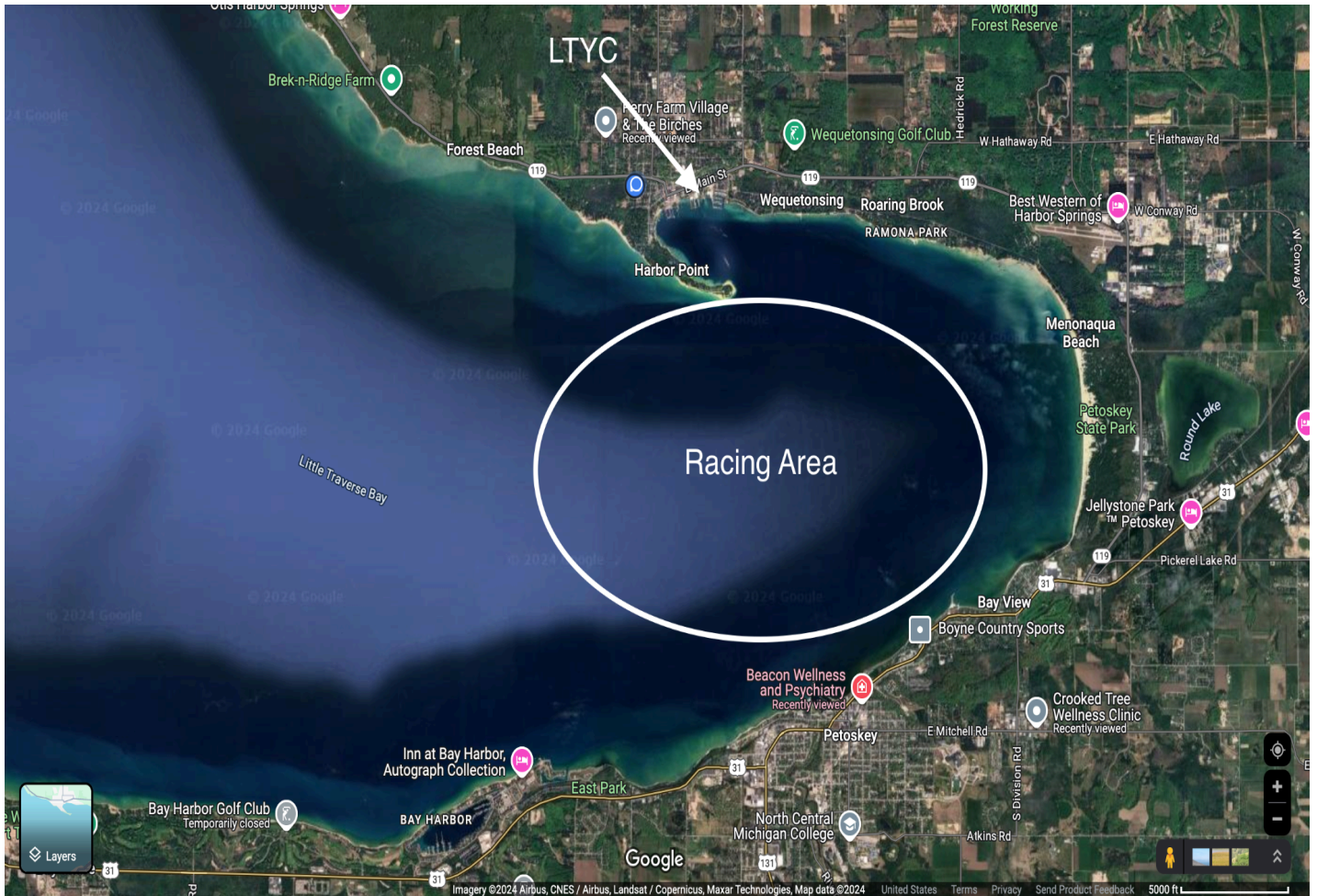


Windrose Plot for [MGN] HARBOR SPRINGS  
 Obs Between: 01 Oct 2002 12:55 AM - 31 Oct 2023 11:55 PM America/Detroit  
 ↳ constraints: Oct



- Avg Temperature High/Low 57 42 °F
- Days of Precip 10
- Daylight hours 11
- Avg wind Speed ~10kts

## 4. RACE COURSE



- The racing area is between 1 and 4 Nautical Miles from the Yacht Club
- Little Traverse Bay is a deep (100'-200') open water venue with minimal obstructions to wind and waves
- Westerlies provide large waves and solid breeze, while easterlies yield flat water and shifty winds offering a range of racing conditions

## 5. RACE MANAGEMENT AFLOAT

### BOATS

- 30' enclosed cabin diesel powered dedicated committee boat with automated horn and powered windlass with 400' of anchor line, flag staffs, wind instruments and logging and course boards
- 25' zodiac rib with suitable anchors, signals, protection and rigging to act as a mark set boat
- 2X 16' zodiac ribs with equipment suitable for committee boat, start/finish line support
- Many other suitable boats available through LTYC membership volunteer/loan

### MARKS\*

- 6 X 5' Yellow Tetrahedrons with suitable ground tackle
- 6 X 5' Orange Tetrahedrons with suitable ground tackle
- 4 X 4' orange cylinders with suitable ground tackle
- 4 X 4' yellow cylinders with suitable ground tackle
- 1 X 5' green tetrahedron with suitable ground tackle

*\* Ideal scenario is to use Mark Set Bots with Vakaros or similar gps starting system*

### PERSONNEL

- Multiple local members who are certified National and International Judges
- Dedicated full time Sailing Director with experience competing in, and winning world championships as well as running large 80-100 + boat championship events
- Large knowledgeable member volunteer pool
- Full Time Harbor Master to assist with use of Municipal dock and facilities as well as City Hall trailer parking and shuttles if needed



## 6. RACE MANAGEMENT ASHORE



### LITTLE TRAVERSE YACHT CLUB

- Full service Kitchen and bar
- Multiple flat screen TV's capable of screen sharing and streaming
- High-speed large bandwidth Wi-Fi
- 2 protest/jury rooms and a larger office
- Multiple bathrooms and changing areas
- Large covered rear patio and outdoor seating area large enough for sail measurement, post-sailing socials, food trucks, catering and prize givings.
- 150' dock capable of holding all needed race management boats and equipment
- Large signal flag pole visible from entire city waterfront

### IRISH BOAT SHOP

- Multiple Large boat sheds adjacent to Yacht Club and easily used for equipment measurement and inspection
- Multiple bathrooms
- 1 small crane and 1 fork lift capable of lifting and weighing boats as well as launching
- Full chandlery and ship services
- Offices and conference rooms if needed for protests or admin overflow

## 6. RACE MANAGEMENT ASHORE (Continued)

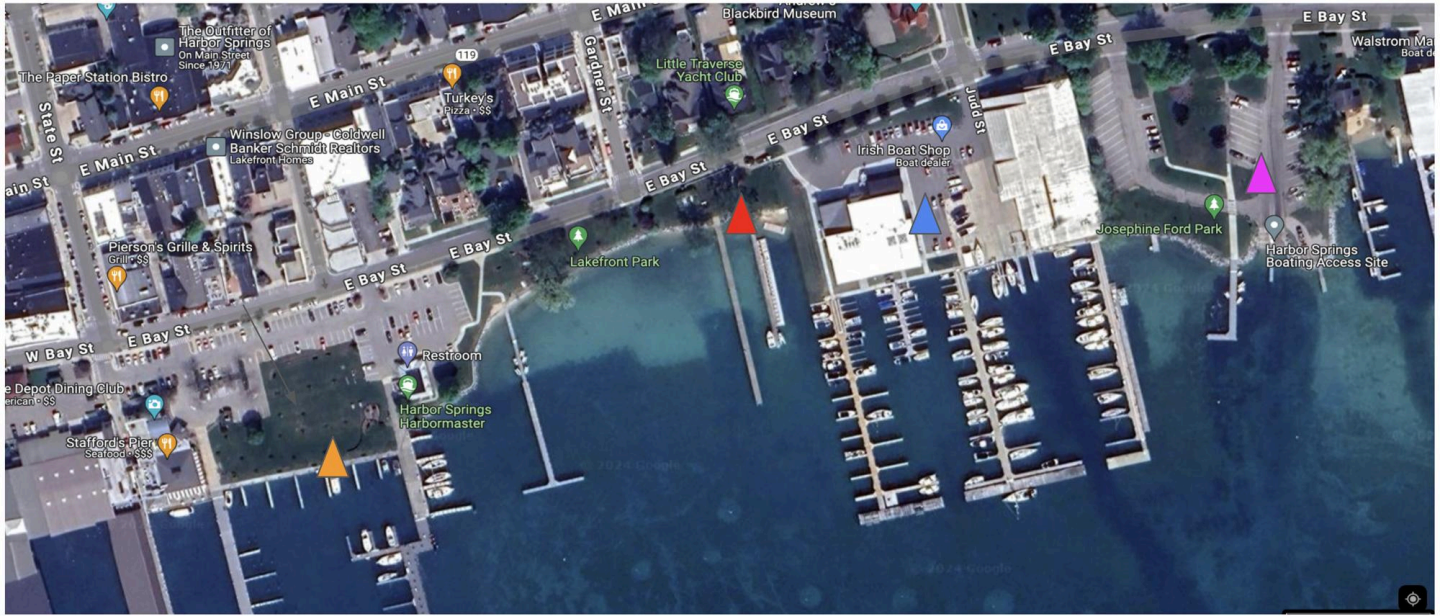
### HARBOR SPRINGS MUNICIPAL MARINA

- City of Harbor Springs has agreed to dedicate use of 300' Pier to the Worlds event
- Can accommodate 100 boats with room for dock boxes and equipment
- Electricity and fresh water available across entire pier
- Full bathrooms and showers available
- Large green open space available for sail maintenance as well as lawn games and relaxation
- Rubbish and recycling available throughout marina
- Ample free public parking at marina as well as on city streets
- Bike racks and fuel dock

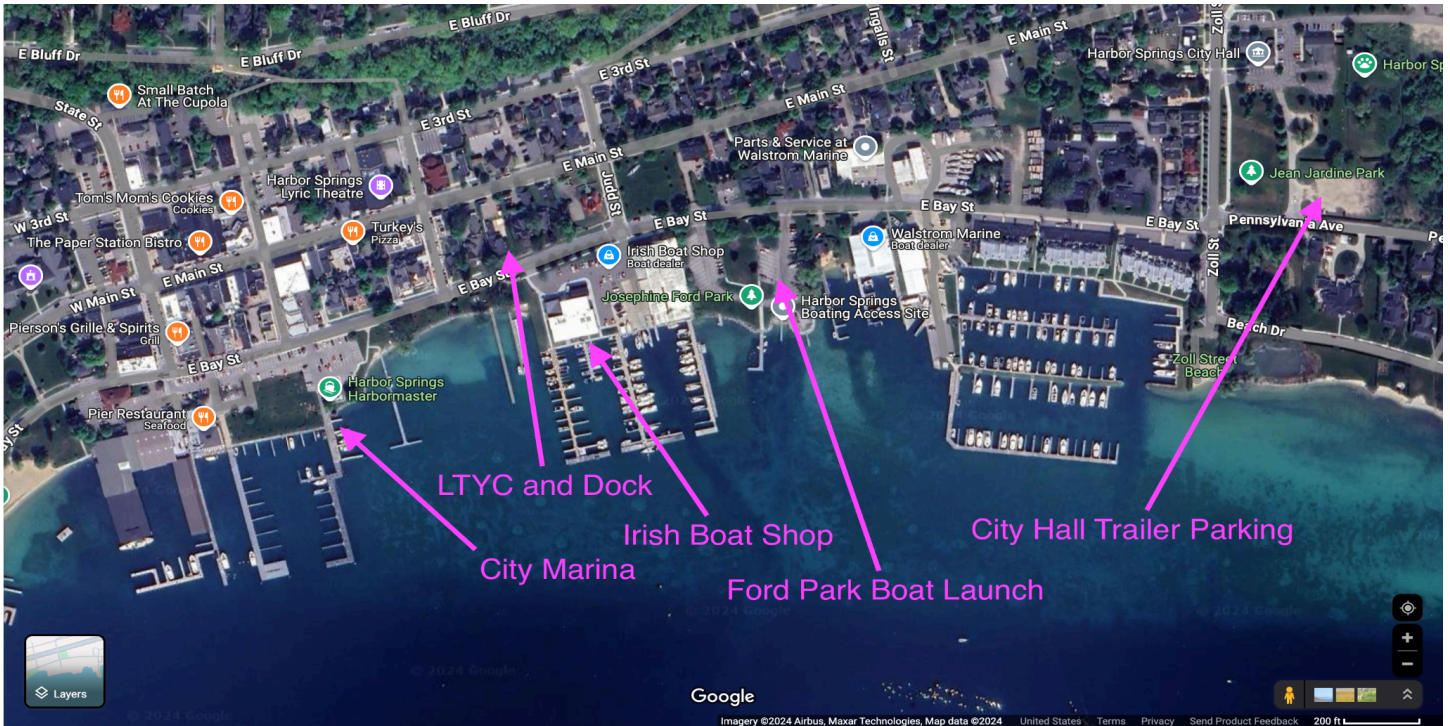
### FORD PARK

- Large Green open space
- Multiple bathrooms
- 2 paved ramps for launching with adequate depth for Melges 24 with keel down
- 5 min walk from Marina and 2 min walk from LTYC
- 5 min walk from city hall trailer parking lot which is **\*\*unobstructed by overhead obstacles\*\***

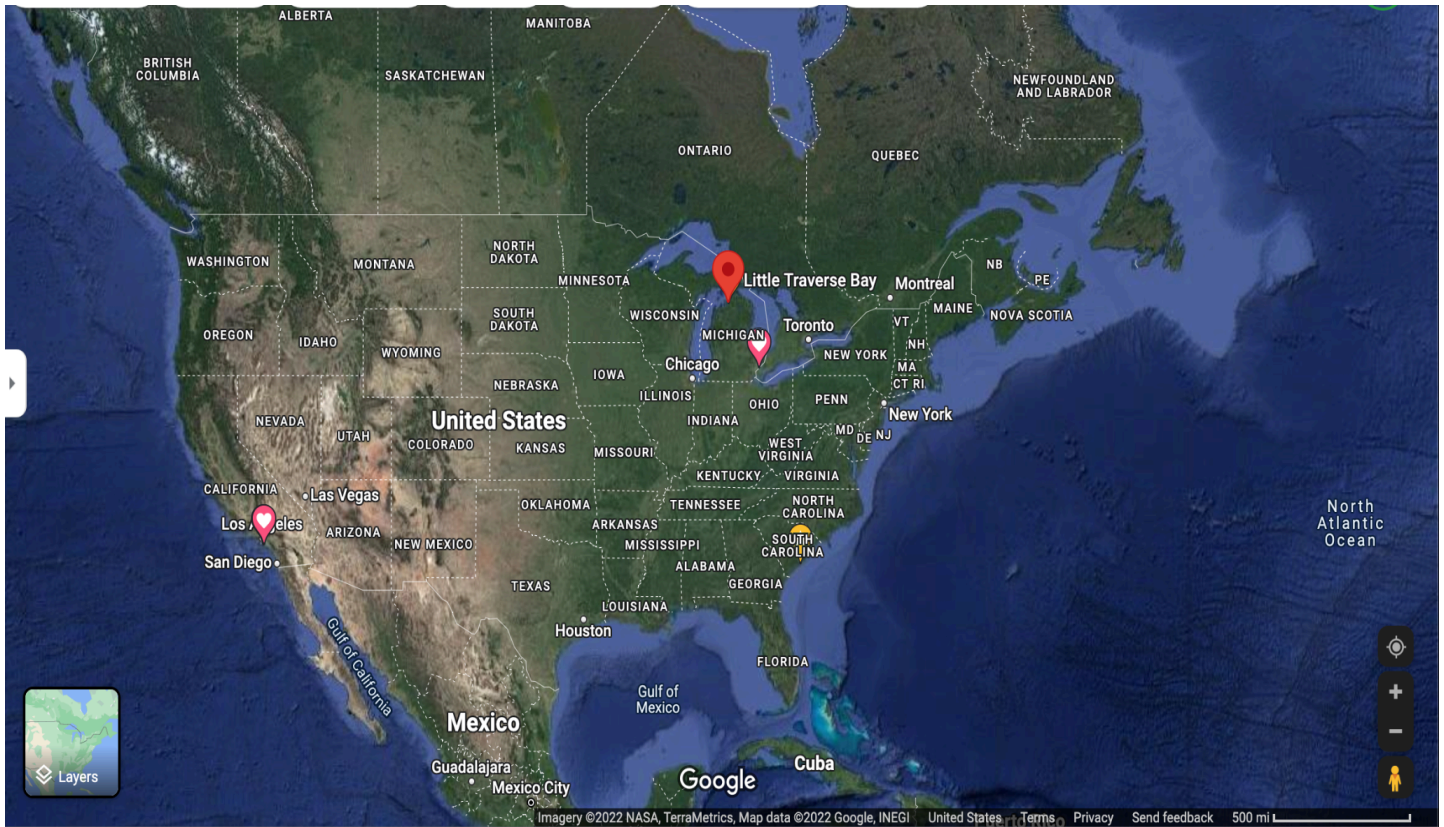
# 7. SHORE FACILITIES & DOCKAGE



- ▲ CITY MARINA
- ▲ LTYC & DOCK
- ▲ IRISH BOAT SHOP
- ▲ FORD PARK LAUNCH RAMP



## 8. LOCATION



Harbor Springs is Located in Northwest Lower Michigan. It is a 4 hour drive from both Detroit and Grand Rapids, the 2 major cities/airports in the state. Harbor Springs is a 6 hour drive from Chicago. Northern Michigan is serviced by 3 regional airports, Traverse City (TVC), Pellston (PLN) and Chippewa County (CIU). Traverse City is a 90 min drive while CIU is 60 min and PLN is 15 min. Uber, car hire and shuttle services are available from all 3 airports.

## 9. LOGISTICS



We are equipped to handle boat measurement and equipment inspections. We also have storage of all levels for prolonged periods before and after the event as well as shipping container logistics and handling on-site.



## 10. HOUSING & ACCOMMODATIONS

Northern Michigan is a tourist haven, and the month of October allows for greater availability in housing. VRBO and home rentals through local realtors are the most common option for the Harbor Springs area. All price levels are available when allowing for a 10 minute commute.

- **Colonial Inn** (41 guest rooms) and **OTIS Hotel** (Just opened this summer - 43 guest rooms) — both fantastic local hotels just a few minutes commute from docks
- Ample rental housing market
- **Petoskey:** a 10-15 minute commute offers hotels of all price levels
- **Bay Harbor:** a waterfront community in Petoskey offers a luxury hotel and luxury homes and condos
- The **Petoskey State Park offers RV camp-sites** as well as tent sites. This park is on the shores of the racing area
- **Boyne Highlands**, a 5 minute commute offers 3 golf courses, luxury homes, condos and hotels.

## 11. DINING & ENTERTAINMENT

- Harbor Springs boasts waterfront dining options as well as cafes, and coffee shops, fitness and yoga studios
- Nearby Petoskey has plentiful dining options for all budgets and tastes.
- Both Petoskey and Harbor Springs have multiple bars and pubs that feature live music and entertainment
- The Highlands of Harbor Springs (formerly Boyne Highlands) has 3 public championship golf courses
- In addition to The Highlands, there are 4 other public golf courses nearby
- October is prime Leaf Peeping time and Emmet County has the “Tunnel of Trees” pathway for cars or cycling
- The Highlands offers a mountain bike park with chairlift access in addition to 200+ miles of single track
- The North Country Trail is accessible just minutes from the Town and traverses 4000 acres of state forest
- October is also a great month to see the aurora borealis, Emmet County maintains a dark sky park 30 min north of town

## 12. CONTACT

**LTYC Rear Commodore**

**George Peet**

Melges 24 USA 830 *Straightarrow*

eMail: [ghpeet1@gmail.com](mailto:ghpeet1@gmail.com)

Mobile: +1 401 595-9668