



**International Melges 24 Class
World Championship
28.7- 4.8.2017
HSK
Helsinki, Finland**

SAILING INSTRUCTIONS

1 RULES

- 1.1 The regatta will be governed by the rules as defined in *The Racing Rules of Sailing (RRS)*
- 1.3 The Equipment Rules of Sailing will apply.
- 1.4 The following rules will be changed in accordance with rule 86.1(b) :
 - 1.4.1 All competitors shall wear personal flotation devices while racing, except for brief periods while changing or adjusting clothing. Wet suits and dry suits are not personal flotation devices. This changes rule 40.

- 1.4.2 Appendix T RRS 2017-20 will apply. A post-race penalty will be 25%.

- 1.4.3 The Race Committee (RC) will use VHF radio to communicate to the fleet. Failure to make broadcasts or failure to hear the broadcast shall not constitute grounds for granting redress. This changes rule 62.1.
- 1.4.4 Appendix P will apply, as changed in S.I. 14.6.
- 1.5 The WORLD SAILING Sailor Classification Code will apply for competitors competing for the Corinthian Trophy, in accordance with the IM24CA regatta regulations.
- 1.6 If there is a conflict between languages the English text will take precedence.
- 1.7 The International Jury may impose penalties less than disqualification (DPI), for violation of the Class rules and Racing rules other than those of Part 2.
- 1.8 Class rule H3 will apply.

2 NOTICES TO COMPETITORS

- 2.1 Notices to competitors will be posted on the official notice board located at the HSK Office (Race Office, see addendum E).
- 2.2 Any questions concerning these sailing instructions, scoring, or any other racing issues shall be submitted in writing to the Race Office. Forms to submit inquiries are available there. All written inquiries and responses will be posted on the official notice board.

3 CHANGES TO SAILING INSTRUCTIONS

Any change to the sailing instructions will be posted before 08:30 on the day it will take effect, except that any change to the schedule of races will be posted by 20:00 on the day before it will take effect.

4 SIGNALS MADE ASHORE

- 4.1 Signals made ashore will be displayed at the flagpole of the HSK Race Office.
- 4.2 When flag AP is displayed ashore, '1 minute' is replaced with 'not less than 75 minutes in the race signal AP. This changes Race Signals.
- 4.3 Flag B hoisted with one sound signal means "Protest time has begun". When lowered with one sound it means "Protest time has ended"

5 SCHEDULE OF RACES

5.1 Schedule

Day	Date	Event	Time
Friday	28 th July	Check-in, Registration & Measurement, Crew Weigh-in. Cranage	12:00-19:00 12:00-19:00
Saturday	29 th July	Check-in, Registration & Measurement, Crew Weigh-in. Cranage	09:00-20:00 09:00- 20.00
Sunday	30 th July	Check-in, Registration & Measurement, Crew Weigh-in. Cranage Practice Race All Boats afloat Opening Ceremony	09.00-17.00 09:00-17:00 Warning signal at 14:00 17:00 19:00
Monday	31 st July	Competitors Briefing Races Daily First prize giving	08:30 1 st Warning Signal at 11:00 As soon as possible
Tuesday	1 st August	Competitors Briefing Races Daily First prize giving	08:30 1 st Warning Signal at 11:00 As soon as possible
Wednesday	2 nd August	Competitors Briefing Races Daily First prize giving Regatta Dinner	08:30 1 st Warning Signal at 11:00 As soon as possible 18:00
Thursday	3 rd August	Competitors Briefing Races Daily First prize giving	08:30 1 st Warning Signal at 11:00 As soon as possible
Friday	4 th August	Competitors Briefing Races Closing Ceremony and Awards	08:30 1 st Warning Signal at 11:00 No warning sign. after 15:00 As soon as possible

5.2 Twelve (12) races are scheduled for this Championship.

5.3 The R.C. may race as many as three (3) races each day.

5.4 The O.A. and/or the R.C. reserve the right to modify the program due to weather conditions or other causes.

6 CLASS FLAGS

The Class flag will be the M24 Class insignia in blue on a white background.

7 RACING AREAS

Addendum A shows the location of racing areas. Every day, the race area of the day will be posted on the official notice board. If there is not an official notice to the sailors before 09:00 each day, the racing area will be area "E" area as shown on Addendum A.

8 THE COURSES

- 8.1 No later than the Warning Signal, the RC signal boat will display the course, the approximate magnetic bearing and the distance to the 1st mark from the Signal Boat.

Example:

L2	<i>Course to be sailed</i>
240	<i>Approximate magnetic bearing to Mark 1</i>
1.5	<i>Approximate distance to Mark 1. (nautical miles)</i>

Course L2 : Start –1a-1b – Gate (2S/2P) - 3a-3b – Finish

Course L3 : Start - 1 a-1b - Gate (2S/2P) - 3a-3b – Gate (2S/2P) –3a-3b - Finish

8.2 The RC signal boat will display also the appropriate numeral pennant to indicate the course to be sailed. Marks 1a/b and 3a/b shall be rounded to port. Marks 1b and 3b are offset marks and will be positioned to port of Marks 1a and 3a

8.3 a) Except when there is a change of course, the Gate will be positioned approximately to windward of the RC Signal Boat.

b) The Gate may be laid after the starting signal.

c) If only one Gate mark is set, boats shall round the single mark to port.

8.4 The RC will broadcast the course, bearing and distance information before the Warning Signal. Failure to broadcast or to receive this notification shall not constitute grounds for granting redress. This changes RRS 62.1(a).

9 MARKS

9.1 Marks 1a) and 1b) will be yellow buoys. Marks 2S and 2P will be orange buoys. Marks 3a) and 3b) will be orange buoys.

9.2 Finishing mark will be a staff displaying orange flag.

10 AREAS THAT ARE OBSTRUCTIONS

Race area “E”, no obstructions

11 THE START

11.1 Races will be started by using RRS 26.

11.2 To alert boats that a race or sequence of races will begin soon, the orange starting line flag will be displayed with one sound at least five (5) minutes before a Warning Signal.

11.3. The starting line will be between a staff displaying an orange flag on the signal boat at the starboard end and a staff displaying an orange flag on a committee boat at the port end.

11.4 A boat starting later than 4 minutes after her starting signal will be scored Did Not Start without a hearing. This changes RRS 63.1, A4 and A5.

11.5 Individual recalls and boats disqualified under RRS 30.3 and 30.4 will be broadcast using bow or sail numbers (see SI 25.2 and 25.3).

The RC will broadcast twice the bow or sail numbers of all boats observed to be OCS, UFD or BFD at the start. It will not alter the list based on a boat's action subsequent to the start.

11.6 Individual and General Recall flags will be displayed by the RC signal boat and may be repeated by the other starting vessels.

12 CHANGE OF THE NEXT LEG OF THE COURSE

12.1 To change the next leg of the course, the race committee will move the original mark (or move the finishing line).

12.2 Except at a gate, boats shall pass between the race committee boat signalling the change of the next leg and the nearby mark, leaving the mark to port and the race committee boat to starboard.

12.3 In case of a change of the leeward gate, the starboard mark 2S alone will be replaced by the change mark, the port mark 2P remaining the same (orange buoy).

13 THE FINISH

The finishing line will be between a staff displaying an orange flag on the finishing line boat and and a staff displaying an orange flag on a committee boat at the port end.

14 PENALTY SYSTEM

14.1 The first two sentences of rule 44.1 are changed to read: "A boat may take a One-Turn Penalty when she may have broken a rule of Part 2 or rule 31 or Class rule C11 while racing.

14.2 If a members of the Jury witnesses a breach of RRS Part 2, RRS 31 and/or Class rule C.11, they may indicate their observation by making a long sound (whistle) and showing a red flag. The boat shall then exonerate herself by complying with SI 14.1. and 14.7. If no penalty is taken the Jury may protest.

14.3 If the members of International Jury witnesses a protest being hailed and the red flag being shown, they may decide the incident then and indicate by hailing the bow / sail number and pointing to her which boat, if any, shall take a penalty. Judge initiated penalties may be imposed if the boat breaks rule 31 or class rule C11.

14.4 If a members of the Jury witnesses an incident and decides that no breach occurred (no rules were broken), they may indicate their observation by making a long sound (whistle) and displaying a green and white / green flag.

14.5 A boat that has taken a penalty or retired under rule 31 or 44.1 shall complete an acknowledgment form at the Race Office within the protest time limit.

14.6 Appendix P will apply, changed as follows :

14.6.1 The penalty under rule P2.1 is changed to be a one-turn penalty.

14.6.2 Rule P2.3 will not apply and rule P2.2 is changed so that it will apply to any penalty after the first one.

14.7 Protests involving a rule of Part 2 and RRS 31 will be subject to arbitration.

15 TIME LIMITS AND TARGET TIMES

15.1 Time limits and target times are as follows:

<u>Time Limit</u>	<u>Mark 1 Time Limit</u>	<u>Target Time</u>
120 minutes	40 minutes	60 minutes

If no boat has passed Mark 1 within the Mark 1 time limit the race will be abandoned.

Failure to meet the target time will not be ground for redress. This changes rule 62.1(a)

15.2 All boats not finishing within 30 minutes of the finish time of the first boat that sails the course and finishes shall be scored "TLE" (Time Limit Expired) without a hearing. This changes RRS 35, A 4.1, A 4.2 and A11.

16 PROTESTS AND REQUESTS FOR REDRESS

16.1 Protest forms are available at the race office. Protests and requests for redress or reopening shall be delivered there within the time limit.

The official jury board is located at the Race Office. Protest and other forms will also be available there.

- 16.2 The protest time limit is 60 minutes after code flag “B” is displayed (SI 4.3). This will be hoisted as soon as practicable as the first boats return to harbour. The same time limit applies to protests by the RC and Jury about incidents they observe in the racing area and to requests for redress. This changes rules 61.3 and 62.2.
- 16.3 Notices will be posted no later than 30 minutes after the protest time limit to inform competitors of hearings in which they are parties or named as witnesses. Hearings will be held in the Jury room, see addendum E.
- 16.4 Notices of protests by the race committee or jury will be posted to inform boats under rule 61.1(b).
- 16.5 A list of boats that, under instruction 14.6, have been penalized for breaking rule 42 will be posted.
- 16.6 Breaches of instructions 14.5, 18, 21, 23, 24, 25, 26 and 30 will not be grounds for a protest by a boat. This changes rule 60.1(a). Penalties for these breaches may be less than disqualification if the jury so decides
- 16.7 On the last scheduled day of racing a request for reopening a hearing shall be delivered
 - (a) within the protest time limit if the requesting party was informed of the decision on the previous day;
 - (b) No later than 30 minutes after the requesting party was informed of the decision on that day. This changes rule 66.
- 16.8 On the last scheduled day of racing a request for redress based on a jury decision shall be delivered no later than 30 minutes after the decision was posted. This changes rule 62.2.
- 16.9 Decisions of the international jury will be final as provided in rule 70.5.
- 16.10 An Arbitration system will be in operation for protests of rules in RRS Part 2 and RRS 31. The details of arbitration are to be found in RRS Appendix T.
- 16.11 The Classification Protest Time Limit is the end of the protest time limit on the first day of racing (31 August 2017) for the championship.

17 SCORING

- 17.1 The Low Point scoring system of RRS Appendix A, as changed below shall apply.
- 17.2 Five (5) races are required to be completed to constitute a series. Twelve (12) races are scheduled.
- 17.3 When fewer than 6 races have been completed, a boat’s series score will be the total of her race scores.
- 17.4 When from 6 to 12 races have been completed, a boat’s series score will be the total of her race scores excluding her worst score.
- 17.5 Boats scored “TLE” will be scored points equal to the number of boats finishing within the time limit plus two points by the race committee without a hearing. This changes rules A4.2, A5, and A11.

18 SAFETY REGULATIONS

A boat that retires from a race or leaves the racing area between races shall notify the Race Committee as soon as possible.

19 REPLACEMENT OF CREW OR EQUIPMENT

- 19.1 Substitution of competitors will not be allowed without prior written approval of the Race Committee.
- 19.2 Substitution of damaged or lost equipment will not be allowed unless authorized by the Race Committee. Requests for substitution shall be made to the Committee at the first reasonable opportunity.

20 EQUIPMENT AND MEASUREMENT CHECKS

A boat or equipment may be inspected at any time for compliance with the class rules and sailing instructions. On the water, a boat can be instructed by an equipment inspector to proceed immediately to a designated area for inspection

21 OFFICIAL BOATS

Official boats will be marked as follows:

RC Signal boat	RC
Port-end RC boat	RC
Windward mark/stake boat	RC
Jury boats	Jury
Press Boats	Media
Measurement Boat	Measurement
Safety boats	Safety
Official boats	RC

22 SUPPORT BOATS

Team leaders, coaches and other support personnel shall comply with Addendum C

23 HAUL-OUT RESTRICTIONS

Boats shall not be hauled out during the regatta except with and according to the terms of written permission of the Race Committee.

24 DIVING EQUIPMENT AND PLASTIC POOLS

Underwater breathing apparatus (excluding snorkels) and plastic pools or their equivalent shall not be used around boats between the preparatory signal of the first race and the end of the regatta.

25 RADIO COMMUNICATION

- 25.1 Except in an emergency, a boat shall neither make radio transmissions while racing nor receive radio communications not available to all boats. This restriction also applies to mobile telephones.
- 25.2 The RC will use VHF radio to communicate to the fleet, including the location of the starting area, countdown to the start, OCS bow or sail numbers, General Recalls and Postponements. Failure to make these broadcasts or failure to hear them shall not constitute grounds for granting redress. This changes rule 62.1 (a).
- 25.3 VHF channel 72 will be used to communicate with the competitors.

26 RELATIONS WITH COACH AND SUPPORT BOATS

- 26.1 All boats shall proceed to the racing area and back to harbour under their own power, without external help.
- 26.2 There shall be no transfer of any goods or equipment between competing boats and their coach or support boats until after the finish of the last race of the day. See Addendum C

27 PRIZES

Prizes will be given as follow NOR.

28 DISCLAIMER OF LIABILITY

Competitors participate in the regatta entirely at their own risk. See rule 4, Decision to Race. The organising authority will not accept any liability for material damage or personal injury or death sustained in conjunction with or prior to, during, or after the regatta.

29 INSURANCE

The boat is required to hold adequate third-party insurance, and it is the owner or owner's representative's sole and inescapable responsibility to ensure that the insurance is in place and is adequate.

30 BOW NUMBERS

- 30.1 Boats shall display bow numbers during the event. These, and instructions as to position (Addendum D) will be supplied by the organising authority. It is the responsibility of the crew to ensure the numbers remain on the boat and obtain replacements as necessary.
- 30.2 Event Bow stickers shall be attached to both sides of the boat's hull at all times while racing.

31 CAMERAS & ELECTRONIC EQUIPMENT

Boats may be required to carry cameras, sound equipment or positioning equipment as specified by the organising authority.

32 MEDIA RIGHTS

Competitors grant the Organising Authority and IM24CA, the unrestricted right and permission to use the name and the image for any text, photograph or video footage of either themselves or the boat they are sailing during the event to be published or broadcast in any media whatsoever (including but not limited to Press and TV advertisements or Internet), for either editorial or advertising purposes or to be used in press information; in this respect, competitors' names and any biographical material of themselves may also be used or reproduced in any way known. As part of the registration process, each individual participating crewmember will be required to sign a declaration accepting this waiver of rights.

33 TRASH DISPOSAL

Boats shall not intentionally put trash in the water.

34 BERTHING

Boats shall be kept in their assigned places in the harbour.

OFFICIAL BOARD :

HSK Organization: Ted Gröndahl

IM24CA Administrator: Piret Salmistu

IM24CA Championship Coordinator Europe: Benedek Fluck

RACE COMMITTEE:

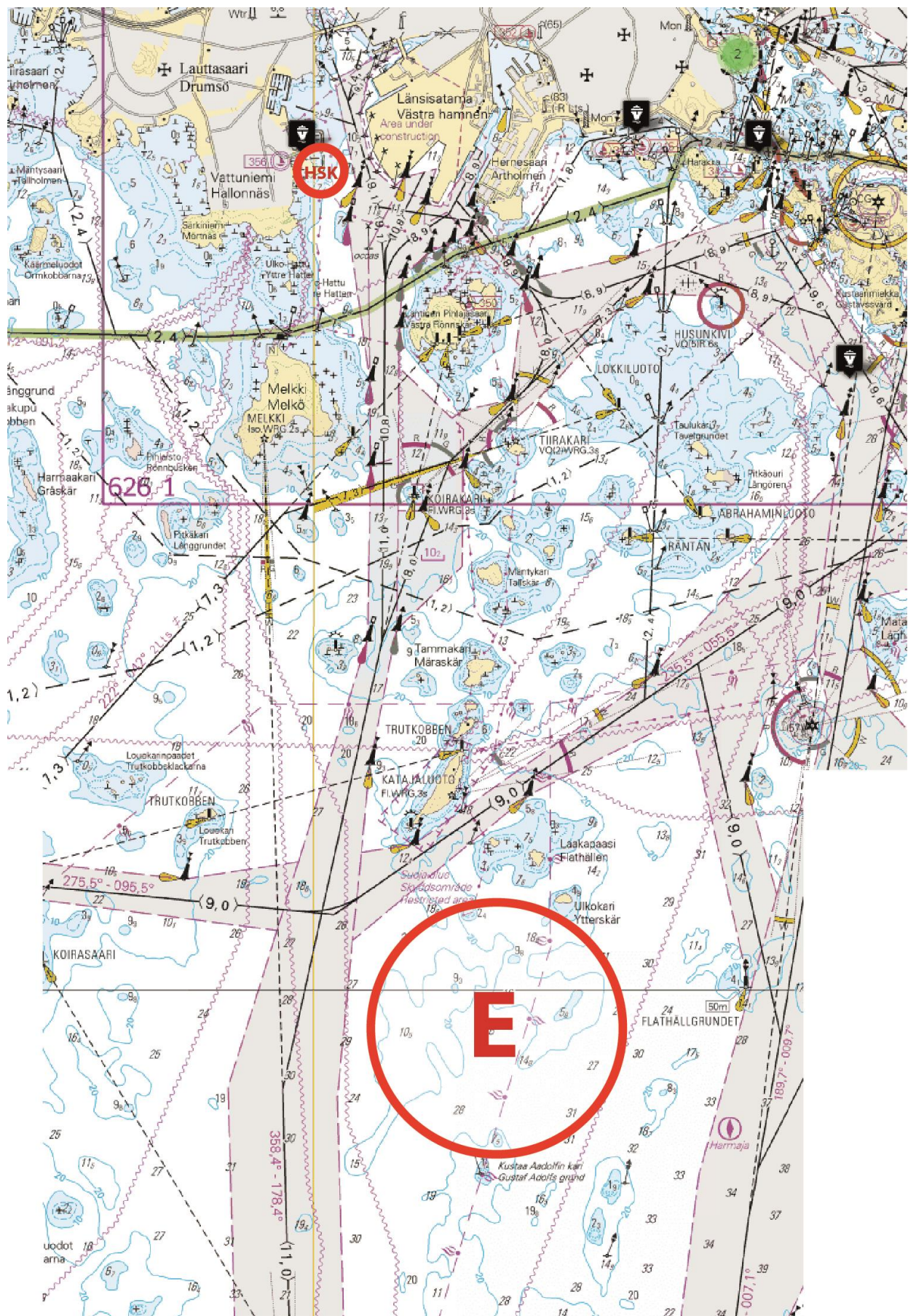
Principal Race Officer: Madis Ausman, (IRO), EST

EVENT MEASURER: Agnes Lill, EST

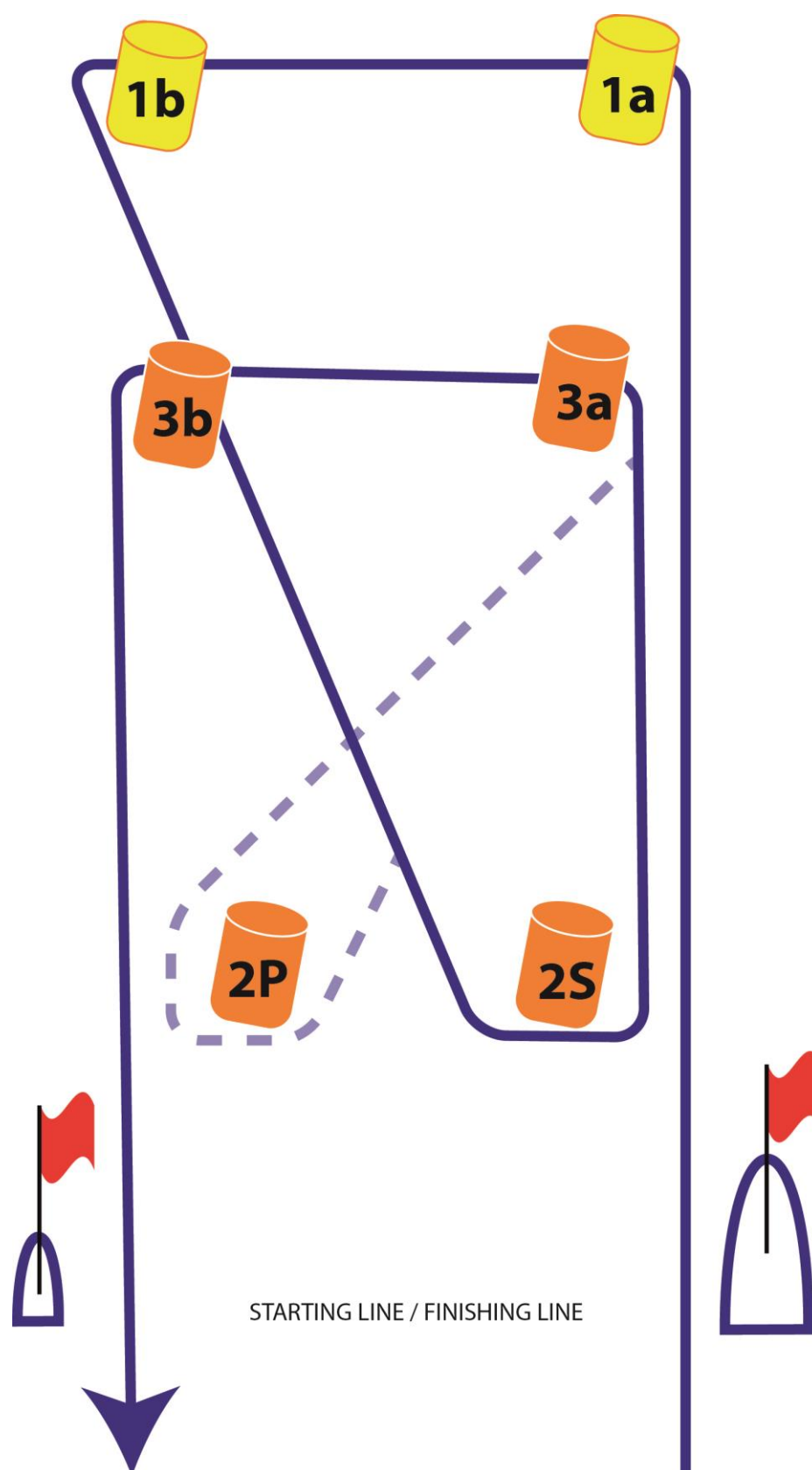
INTERNATIONAL JURY CHAIR:

Eric Mehlbaum (IJ), NED

Addendum A - Racing Areas



Addendum B- Course configuration



APPENDIX C – Coach, Support and Press Boats

COACH AND SUPPORT BOATS

1. Coach and support boats shall register with the race office during registration. They shall declare which boat or boats they are attached to.
2. Coach and support boats shall display a flag, or other identification symbol, as may be required by the race committee.
3. No coach boat or support boat shall pass information in any way to a boat that is racing. Rule 41. Infringements of this will be taken very seriously.
4. Coach and support boats shall communicate only with the boats they are registered to, and only by means of voice between races. Closed VHF or mobile telephone communication is prohibited.
5. Coach and support boats shall not tow any Melges 24 boats from the harbour to the racing area or back to harbour. A breach under this instruction will be considered as a breach of rule 41 by the boat being towed. Coach and support boats shall not go alongside their Melges 24's until after the finish of the last race of the day.
6. Coach and support boats shall keep clear of the racing area at all times during racing.
7. Any coach or support boat that interferes with another competitor or the racing in any way, including creating excess wash, or hinders an official boat carrying out its duties shall have the competitor(s) to which they are attached, liable to a penalty at the discretion of the jury.
8. Any competitor may protest under this attachment.
9. The penalty given by the jury is at their discretion, but shall be applied to the overall score and therefore not discarded.

PRESS AND SPECTATOR BOATS

1. All Press and official spectator boats shall be registered by the race organising authority during registration.
2. Press and spectator boats shall display any flag, or other identification symbol as may be required by the race committee.
3. The race organisers may appoint one or more photo boats, which will be allowed within the race course. The position of these boats shall not be grounds for redress.
4. Press and spectator boats shall not interfere with the racing in anyway and shall stay at a distance outside the racecourse where their wake causes no problem.

APPENDIX D – Bow Number & Backstay Pennant Placement

STICKERS AND BOW NUMBERS DIAGRAM

BOW NUMBER AND EVENT SPONSOR STICKER/PENNANT INSTRUCTIONS TO APPLY VINYL BOW NUMBERS AND SPONSORS STICKERS ON HULL:

1 – Make Sure hull is clean!!! (Clean and let dry)

The numbers and stickers are made to be removable, so you need to wipe the hull with a solvent to remove any waxes. If a Teflon wax has been used on the boat repeat this step until tape sticks easily to hull.

2 – The bow numbers shall be displayed on both sides of the bow in accordance with the diagram. The sponsor's sticker shall be aft of the bow numbers.

3 – Remove wax paper backing from numbers and stickers by peeling away the top or corner of the backing paper.

4- Position, with masking tape if necessary, in the appropriate place, and remove the rest of the backing paper. A light spray of water will assist in sliding larger stickers into the correct position.

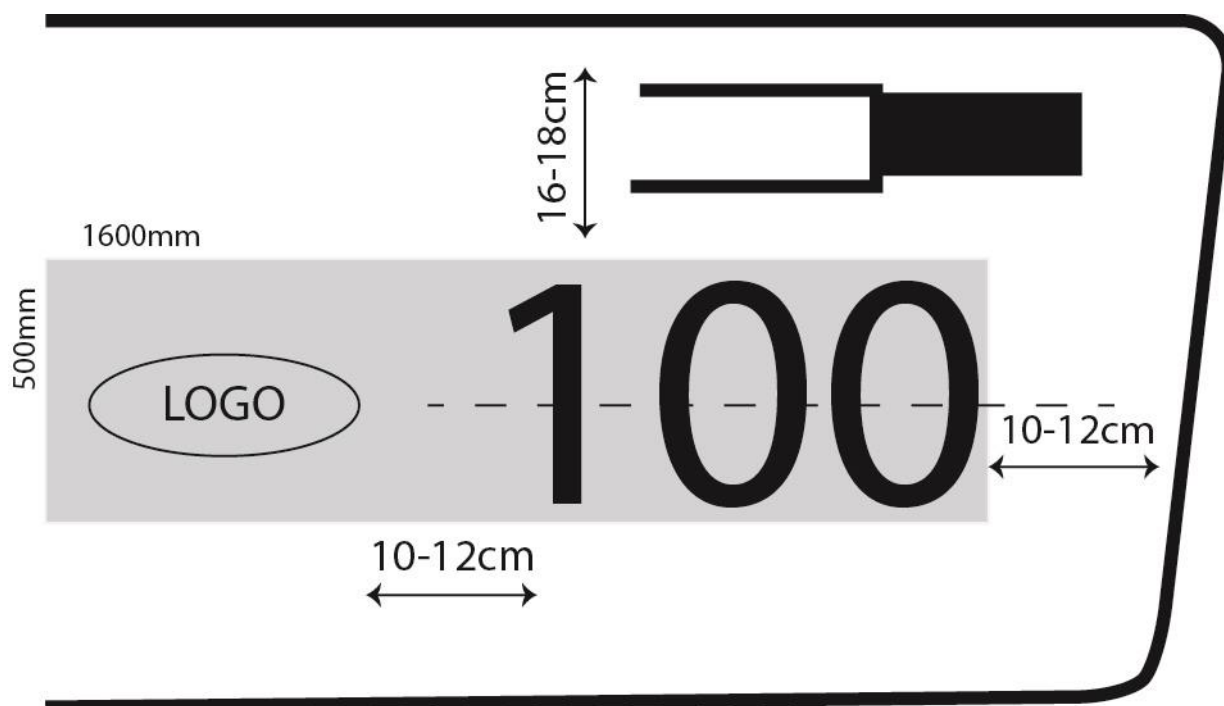
5 – Squeegee stickers to remove all air bubbles and water. Work from the center outwards towards edges, rub thoroughly.

** A Squeegee can be a credit card, plastic scraper, or any similar smooth piece of plastic.

6 – Peel any masking tape or outer sheet off boat pulling slowly making sure that you are pulling the tape back against itself, and not out away from the boat.

7 – Rub with soft towel.

8 - Please note the Sailing Instructions make it your responsibility to ensure your bow numbers remain in place and are visible.



ADDENDUM E

The venue

1. Car / trailer park

2. Media

Weight-in

3. Measurement (downstairs)

Jury (upstairs)

4. Race Office

5. Restaurant Blue Peter

6. Crane

7. Mooring

